



TECHNICAL SPECIFICATIONS

PEER GYNT SALEN

Lighting Equipment

pr 01.01.2008

Control

- (1) GrandMA Light control desk. with 10 playbacks "faders".
- (36) celco dimmer channels 3,0 kW

Profiles

- (8) ETC Source Four jr. 25°-50° Zoom 575W

Fresnel

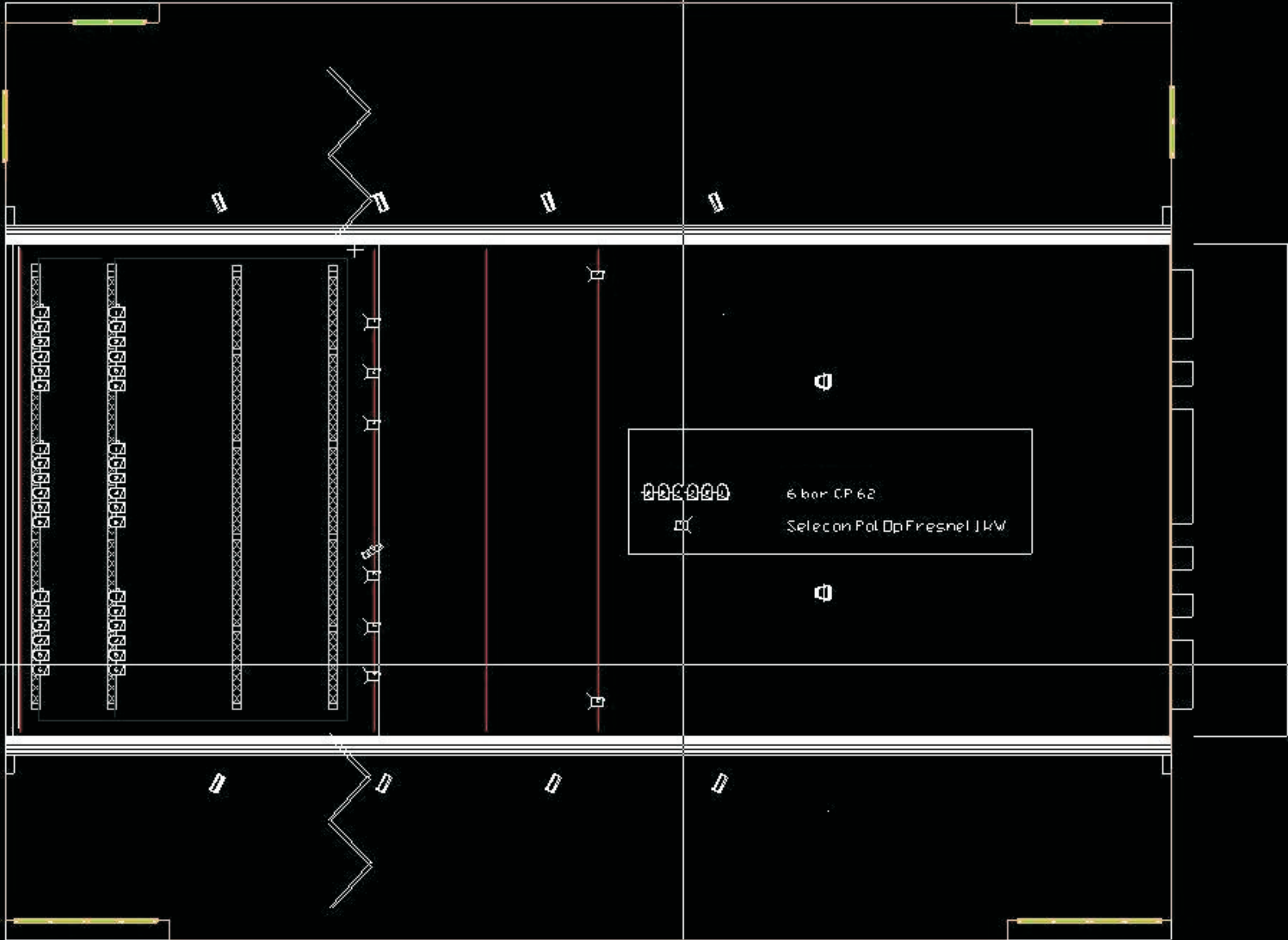
- (8) Selecon (8 stk PoleOperat)

Parcannes

- (36) PAR-64 Thomas, 1 kW with /CP62

Moving lights on demand !

- (4) Martin Mac or (16) Martin Mac



0-0-0-0-0

6 bar CP 62

Selection Pol Op Fresnel 11kW